

# Landscape Conservation Cooperatives Science Priority Projects for FY2010:

## *Vulnerability Assessments*

The Northeast Region of the U.S. Fish and Wildlife Service (Service) has been working with regional partners to develop the North Atlantic Landscape Conservation Cooperatives (NALCC). The NALCC is a conservation science partnership that provides the tools and resources required to plan, design and evaluate conservation. These LCC partnerships consist of federal agencies, states, tribes and non-governmental organizations. The Northeast Region has been working with the NALCC partners to synthesize regional science priority needs. In the future, the fully functioning NALCC steering committee will provide recommendations to fund projects that best address identified science priority needs.

In fiscal year 2010, the Northeast Region received \$920,000 to fund regional science projects that address those identified science priority needs. Guided by regional science priority needs previously identified by the Northeast states, the Service has identified *Supplementing state regional conservation needs (RCNs) funds associated with regional species and habitat vulnerability assessment* as one of three projects meeting some of those needs that and will be funded in fiscal year 2010.

**Lead Investigators:**

To be determined.

**Research Partners:**

Northeast Association of Fish and Wildlife Agencies, Wildlife Management Institute, Service



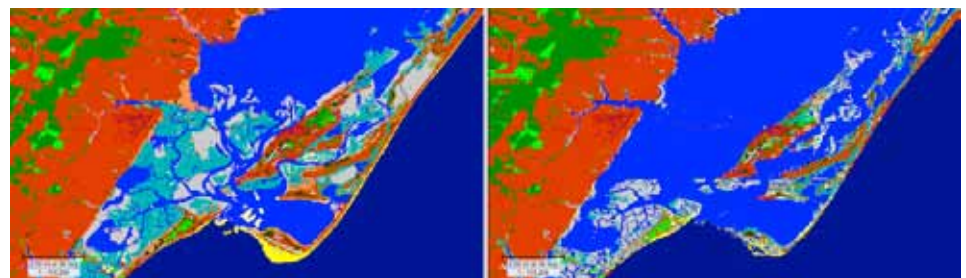
Ralph Tiner/USFWS

*Coastal habitat off Cape Cod, Massachusetts*

**Amount of funding:**  
\$100,000 in fiscal year 2010

**Project Description:**  
*Supplementing state regional conservation needs funds associated with regional species and habitat vulnerability assessment* will build an approach to evaluating the state and regional vulnerabilities of fish and wildlife habitats within the Northeast. \$100,000 will be distributed through the Northeast Association of Fish and Wildlife Agencies' Regional Conservation Needs (RCN) process ([www.rcngrants.org](http://www.rcngrants.org)). Vulnerabilities that may impact species' populations and habitats health include rising sea

levels eroding beaches, dunes, and marshes; increased salinity in marshes and wetlands on the coast; and forest habitat changing as tree species such as spruce shift their distribution further north. Understanding how habitats and species are vulnerable in the changing climate will help conservation managers decide what they can do to plan for the changing environment and help identify the most important conservation actions. Potential projects that assess these vulnerabilities and inform conservation actions may include models of how species populations may change over time, maps of habitat types and how they are changing, and maps of identified



USFWS

*Example of a possible project tool*



areas of vulnerability across the North Atlantic LCC.

If you have any questions regarding this project or the NALCC, please email the NALCC at [northeast\\_lcc@fws.gov](mailto:northeast_lcc@fws.gov) or visit our website at <http://www.fws.gov/northeast/climatechange/lcc>

**U.S. Fish & Wildlife Service**  
**1 800/344 WILD**  
**<http://www.fws.gov>**

**May 2010**



USFWS

*Flooded woods at Blackwater National Wildlife Refuge*